

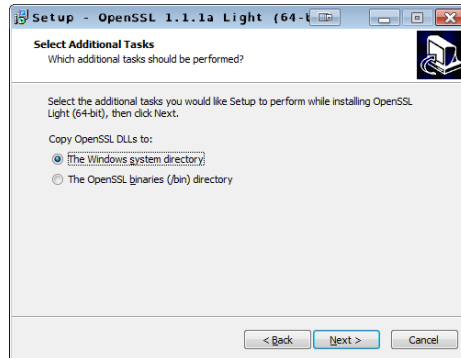
Using stunnel with MushClient.

Step 1: Download and install stunnel and OpenSSH.

<http://www.stunnel.org/downloads.html> Grab the one for your OS. I used the 5.5 win64 installer.

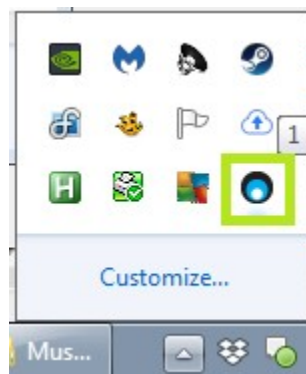
<https://slproweb.com/products/Win32OpenSSL.html> get the top light one.

Install stunnel, but don't start it yet. Install OpenSSL, and chose the option to install in the windows system directory.

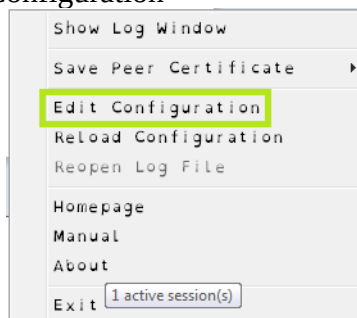


Step 2: Start Stunnel.

It will appear as an icon in the notification tray.



Right Click and select "Edit Configuration"

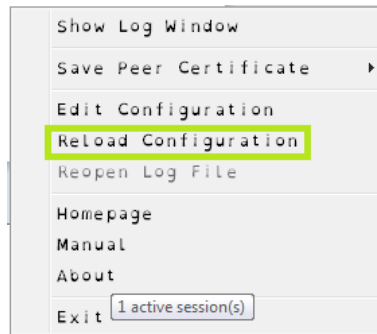


Say Yes at the User Account Control security prompt to open a notepad.

Add this under the gmail options:

```
[Spindizzy]
client = yes
connect = muck.spindizzy.org:7073
accept = 127.0.0.1:7073
```

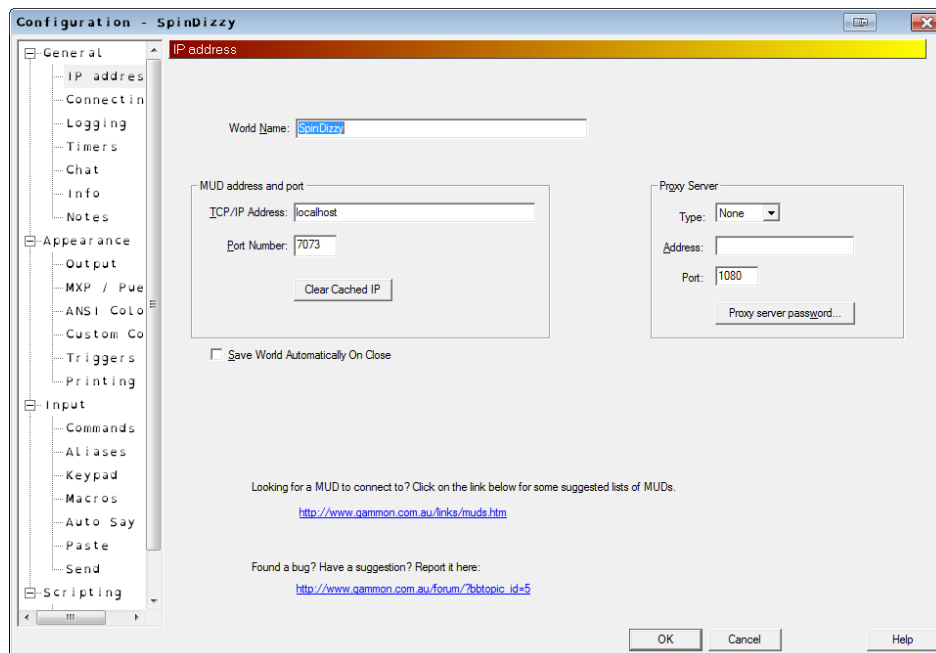
Save the text document, and reload the configuration.



Step 3: Edit your Mushclient world.

For TCP/IP Address put in either "localhost" or 127.0.0.1

Port: 7073



Save the world and connect.